



IMMERSE

Our latest tile line offers a high-end visual appeal at competitive pricing. Immerse is a sophisticated design created by the combination of simple surface texture and subtle color shading. The motifs and highlighted accents vary slightly throughout each tile adding a subtle point of interest on the floor. With a palette of 12 refined colors, Immerse offers a smart blend of neutrals and grays, plus a true black. Immerse can stand alone to define a space or act as the backdrop for other finishes so it's perfect for today's corporate office. However, its understated pattern also makes it a versatile aesthetic suitable for multiple end use markets.

IMMERSE



Jo187-87100



Jo187-87200



Jo187-87205



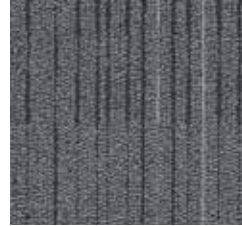
Jo187-87210



Jo187-87300



Jo187-87310



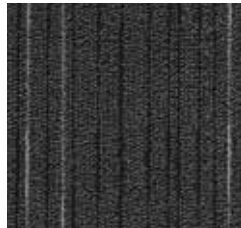
Jo187-87400



Jo187-87500



Jo187-87505



Jo187-87510



Jo187-87700



Jo187-87710

TILE SPECIFICATIONS

FIBER	Eco Solution Q® Nylon
BACKING	EcoWorx®
DYE METHOD(S)	100% Solution Dyed
TUFTED WEIGHT	15 oz.



quickship™



Responsiveness is a crucial part of who we are and what we do. So, it's only natural both our people AND our products are available to serve you immediately.

We will ship up to 2500 sq. yds. tile per style & color in 10 business days or less.


PHILADELPHIA™
COMMERCIAL

Phone: 800.441.7429
www.philadelphia-commercial.com